

単位: mm

| 径の呼び<br>Rc1×Rc2 | A1    | A2   | B   | C1<br>(MIN) | C2<br>(MIN) | D1   | D2   | L    |
|-----------------|-------|------|-----|-------------|-------------|------|------|------|
| 65A×20A         | 77.1  | 27.7 | 96  | 15.9        | 12.7        | 65.9 | 21.4 | 67.3 |
| 65A×25A         | 77.1  | 34.5 | 96  | 15.9        | 12.7        | 65.9 | 27.2 | 67.3 |
| 65A×32A         | 77.1  | 43.2 | 96  | 15.9        | 12.7        | 65.9 | 35.5 | 67.3 |
| 65A×40A         | 77.1  | 49.1 | 96  | 15.9        | 12.7        | 65.9 | 41.2 | 67.3 |
| 65A×50A         | 77.1  | 61.1 | 96  | 15.9        | 12.7        | 65.9 | 52.7 | 67.3 |
| 80A×20A         | 90.0  | 27.7 | 110 | 15.9        | 12.7        | 78.1 | 21.4 | 86.2 |
| 80A×25A         | 90.0  | 34.5 | 110 | 15.9        | 12.7        | 78.1 | 27.2 | 86.2 |
| 80A×32A         | 90.0  | 43.2 | 110 | 15.9        | 12.7        | 78.1 | 35.5 | 86.2 |
| 80A×40A         | 90.0  | 49.1 | 110 | 15.9        | 12.7        | 78.1 | 41.2 | 86.2 |
| 80A×50A         | 90.0  | 61.1 | 110 | 15.9        | 12.7        | 78.1 | 52.7 | 86.2 |
| 80A×65A         | 90.0  | 77.1 | 110 | 15.9        | 12.7        | 78.1 | 65.9 | 86.2 |
| 100A×20A        | 115.4 | 27.7 | 138 | 15.9        | 12.7        | 102  | 21.4 | 110  |
| 100A×25A        | 115.4 | 34.5 | 138 | 15.9        | 12.7        | 102  | 27.2 | 110  |
| 100A×32A        | 115.4 | 43.2 | 138 | 15.9        | 12.7        | 102  | 35.5 | 110  |
| 100A×40A        | 115.4 | 49.1 | 138 | 15.9        | 12.7        | 102  | 41.2 | 110  |
| 100A×50A        | 115.4 | 61.1 | 138 | 15.9        | 12.7        | 102  | 52.7 | 110  |
| 100A×65A        | 115.4 | 77.1 | 138 | 15.9        | 12.7        | 102  | 65.9 | 110  |
| 100A×80A        | 115.4 | 90.0 | 138 | 15.9        | 12.7        | 102  | 78.1 | 110  |

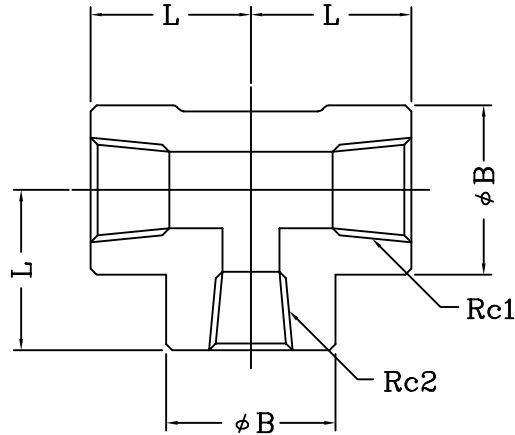
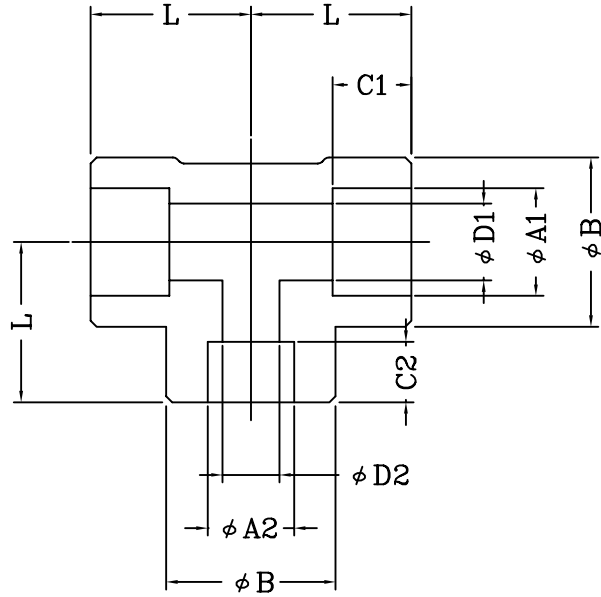
※MINは最小値の為、実寸法は表記以上の長さになります  
※段落ち(枝部)の大きいものは製作となります

参考図面

|    |    |    |    |            |          |                       |                |             |
|----|----|----|----|------------|----------|-----------------------|----------------|-------------|
| 承認 | 検図 | 作図 | 材質 | S25C       | 図面<br>名称 | 管継手製品標準図<br>異径チーz S80 | 図番             | T07-08-1013 |
|    |    |    | 尺度 | -          |          |                       |                |             |
|    |    |    | 日付 | 2015.05.01 | 形式       | 鋼製管継手                 | 株式会社 梅 沢 製 作 所 |             |

上記図面は参考図面となります

単位: mm



| 径の呼び<br>Rc1×Rc2 | A1   | A2   | B  | C1<br>(MIN) | C2<br>(MIN) | D1   | D2   | L    |
|-----------------|------|------|----|-------------|-------------|------|------|------|
| 10A×8A          | 17.8 | 14.3 | 28 | 9.6         | 9.6         | 12.7 | 9.4  | 26.5 |
| 15A×8A          | 22.2 | 14.3 | 33 | 9.6         | 9.6         | 16.1 | 9.4  | 28.9 |
| 15A×10A         | 22.2 | 17.8 | 33 | 9.6         | 9.6         | 16.1 | 12.7 | 28.9 |
| 20A×8A          | 27.7 | 14.3 | 38 | 12.7        | 9.6         | 21.4 | 9.4  | 34.1 |
| 20A×10A         | 27.7 | 17.8 | 38 | 12.7        | 9.6         | 21.4 | 12.7 | 34.1 |
| 20A×15A         | 27.7 | 22.2 | 38 | 12.7        | 9.6         | 21.4 | 16.1 | 34.1 |
| 25A×10A         | 34.5 | 17.8 | 47 | 12.7        | 9.6         | 27.2 | 12.7 | 38.2 |
| 25A×15A         | 34.5 | 22.2 | 47 | 12.7        | 9.6         | 27.2 | 16.1 | 38.2 |
| 25A×20A         | 34.5 | 27.7 | 47 | 12.7        | 12.7        | 27.2 | 21.4 | 38.2 |
| 32A×15A         | 43.2 | 22.2 | 57 | 12.7        | 9.6         | 35.5 | 16.1 | 45.0 |
| 32A×20A         | 43.2 | 27.7 | 57 | 12.7        | 12.7        | 35.5 | 21.4 | 45.0 |
| 32A×25A         | 43.2 | 34.5 | 57 | 12.7        | 12.7        | 35.5 | 27.2 | 45.0 |
| 40A×15A         | 49.1 | 22.2 | 63 | 12.7        | 9.6         | 41.2 | 16.1 | 50.8 |
| 40A×20A         | 49.1 | 27.7 | 63 | 12.7        | 12.7        | 41.2 | 21.4 | 50.8 |
| 40A×25A         | 49.1 | 34.5 | 63 | 12.7        | 12.7        | 41.2 | 27.2 | 50.8 |
| 40A×32A         | 49.1 | 43.2 | 63 | 12.7        | 12.7        | 41.2 | 35.5 | 50.8 |
| 50A×15A         | 61.1 | 22.2 | 77 | 15.9        | 9.6         | 52.7 | 16.1 | 60.1 |
| 50A×20A         | 61.1 | 27.7 | 77 | 15.9        | 12.7        | 52.7 | 21.4 | 60.1 |
| 50A×25A         | 61.1 | 34.5 | 77 | 15.9        | 12.7        | 52.7 | 27.2 | 60.1 |
| 50A×32A         | 61.1 | 43.2 | 77 | 15.9        | 12.7        | 52.7 | 35.5 | 60.1 |
| 50A×40A         | 61.1 | 49.1 | 77 | 15.9        | 12.7        | 52.7 | 41.2 | 60.1 |

※MINは最小値の為、実寸法は表記以上の長さになります  
 ※段落ち(枝部)の大きいものは製作となります

**参考図面**

|    |    |    |    |                 |          |                       |                |              |
|----|----|----|----|-----------------|----------|-----------------------|----------------|--------------|
| 承認 | 検図 | 作図 | 材質 | SUS304/316/316L | 図面<br>名称 | 管継手製品標準図<br>異径チーヅ S80 | 図番             | T507-08-0209 |
|    |    |    | 尺度 | -               |          |                       |                |              |
|    |    |    | 日付 | 2015.05.01      | 形式       | 鋼製管継手                 | 株式会社 梅 沢 製 作 所 |              |

上記図面は参考図面となります