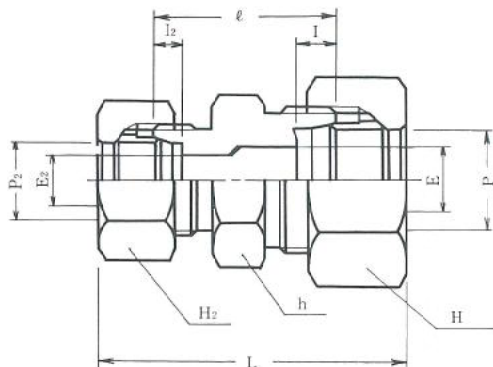
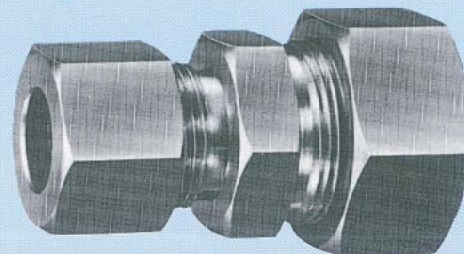


15MPa B型銅管くい込継手
(150kgf/cm²)

GUR型

REDUCING UNION



(注) L寸法はナットを締付け前の概略寸法を示す。

L denotes the rough dimensions before tightening the nuts. 単位：mm

継手の呼称 Designation of Joints	各部の記号 Symbols of respective parts	適用する 管の外径 Tube (O.D) P	P ₂	六角対辺 Opposite side of hexagon			Minimum Opening E	E ₂	l	l ₂	ℓ	(約) Approx. L	1組分 Wt Weight per set (kg)
				h	H	H ₂							
GuR 6 × 4 -B	6 × 4 -B	6	4	14	14	12	4	2.5	7	6	26	43.5	0.040
GuR 8 × 6 -B	8 × 6 -B	8	6	17	17	14	6	4	7	7	31	51	0.060
GuR 10 × 6 -B	10 × 6 -B	10	6	17	19	14	8	4	7	7	31	53	0.070
GuR 10 × 8 -B	10 × 8 -B	10	8	17	19	17	8	6	7	7	31	53	0.075
GuR 12 × 8 -B	12 × 8 -B	12	8	19	21	17	10	6	7	7	31	54	0.085
GuR 12 × 10 -B	12 × 10 -B	12	10	19	21	19	10	8	7	7	31	54	0.090
GuR 15 × 6 -B	15 × 6 -B	15	6	23	26	14	12	4	7.5	7	34	56.5	0.115
GuR 15 × 8 -B	15 × 8 -B	15	8	23	26	17	12	6	7.5	7	34	58	0.130
GuR 15 × 10 -B	15 × 10 -B	15	10	23	26	19	12	8	7.5	7	34	58	0.135
GuR 15 × 12 -B	15 × 12 -B	15	12	23	26	21	12	10	7.5	7	34	58	0.140
GuR 20 × 10 -B	20 × 10 -B	20	10	29	35	19	17	8	8	7	36	58	0.210
GuR 20 × 15 -B	20 × 15 -B	20	15	29	35	26	17	12	8	7.5	38	62	0.250
GuR 25 × 10 -B	25 × 10 -B	25	10	35	41	19	20	8	10	7	37	61	0.275
GuR 25 × 15 -B	25 × 15 -B	25	15	35	41	26	20	12	10	7.5	39	64	0.320
GuR 25 × 20 -B	25 × 20 -B	25	20	35	41	35	20	1	10	8	39	63	0.365
GuR 30 × 10 -B	30 × 10 -B	30	10	41	46	19	25	8	10	7	39	67	0.340
GuR 30 × 15 -B	30 × 15 -B	30	15	41	46	26	25	12	10	7.5	41	70	0.395
GuR 30 × 20 -B	30 × 20 -B	30	20	41	46	35	25	17	10	8	41	70	0.450
GuR 30 × 25 -B	30 × 25 -B	30	25	41	46	41	25	20	10	10	41	69	0.490